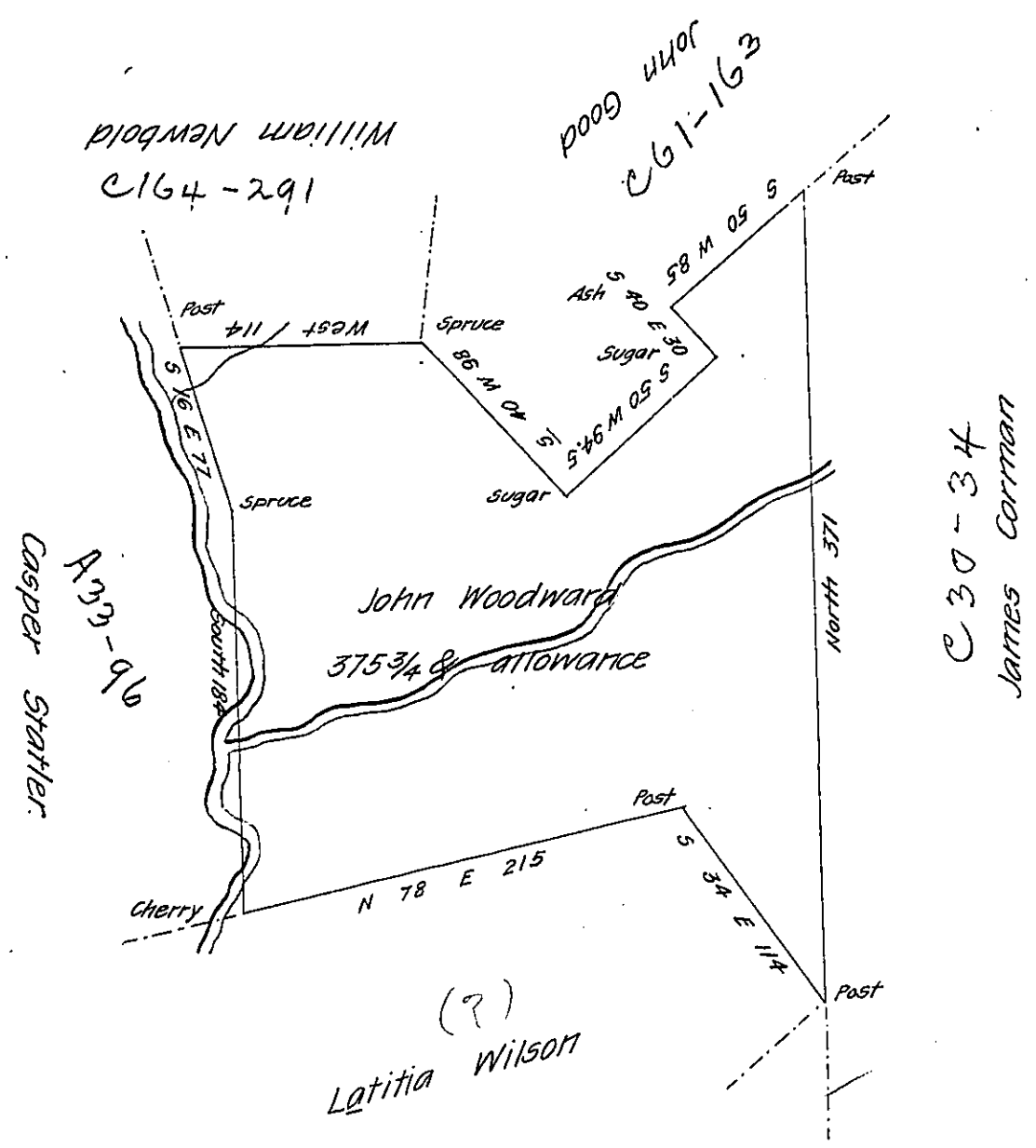


FORM NO. 1.



Situate on Little Shade Creek in Quemahoning Township now Somerset County Surveyed the 3^d of July 1794 by Geo Woods Esq^r late D.S. as appears by his Official draft remaining in my Office in pursuance of a Warrant granted to John Woodward dated the 4th Feb^y 1794 Certified this 23^d day of January 1804

by
John McClean Deputy

To Samuel Cochran Esq^r
Surveyor General.

IN TESTIMONY that the above is a copy of the original remaining on file in the Department of Internal Affairs of Pennsylvania, made conformably to an Act of Assembly approved the 16th day of February 1833, I have hereunto set my hand and caused the Seal of said Department to be affixed at Harrisburg, this thirteenth day of June 1907

Avery Howell
Secretary of Internal Affairs.